

## Loudspeaker



## Loudspeaker



### Portable sound system with wheel case



#### Features:

The PA Portable sound system is a versatile, high-performance, full-range speaker & subwoofer system for mobile sound reinforcement needs.

Passive Built-in 2 way design ,with 2 Neutrik NL4 plug , Neodymium magnet/ Ferrite magnet drivers optional ,birch 18mm cabinet ,anti-scratch textured paint coating , integrated in four wheels case to enable easy transportation, make it professional and widely used in occasions like touring show, shopping mall, hall ,meeting room ,small stage etc. Definitely a good choice for touring sound enforcement needs.

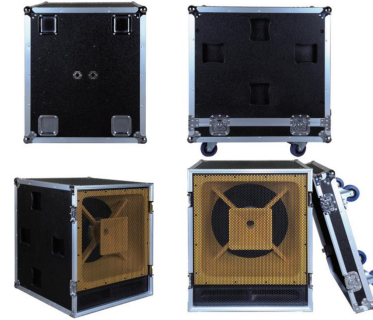
#### TECHNIQUE INDEX

Model	PA925
Units	LF: 2x15",75mm voice core,Neodymium driver HF:2x1.75",Neodymium driver
Frequency Response	±3dB, 40-17K Hz
Sensitivity(1m/1W)	100 dB
Rated/Continuous/Peak power	1000W/2000W/4000W
Maximum SPL	130dB/133dB/136dB
H x V	100°x50°
Impedance	4Ω
Connector	NL4x2,+1/-1
Size	520x480x1200mm
Weight	57KG



25

### Long Throw 18 inch full range speaker covering 0.6 KM



#### Features:

Portable sound system with wheel case

The PA Portable sound system is a versatile, high-performance, full-range speaker & subwoofer system for mobile sound reinforcement needs.

Passive Built-in 2 way design ,with 2 Neutrik NL4 plug , Neodymium magnet/ Ferrite magnet drivers optional ,birch 18mm cabinet ,anti-scratch textured paint coating , integrated in four wheels case to enable easy transportation, make it professional and widely used in occasions like touring show, shopping mall, hall ,meeting room ,small stage etc. Definitely a good choice for touring sound enforcement needs.

#### TECHNIQUE INDEX

Model	PA918
Units	1x18",∅220 mm ferrite magnet,Al basket
Frequency Response	±3dB, 45-19KHZ
Sensitivity(1m/1W)	100 dB
Rated/Continuous/Peak power	1000W/2000W/4000W
Maximum SPL	130dB/133dB/136dB
H x V	/
Impedance	8Ω
Connector	NL4x2,+1/-1
Size	554x598x726mm
Weight	55KG



26